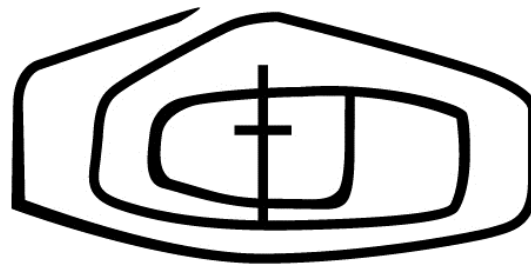


Project: Evangelical Solidarity

Mission: Saint Mary of Guadalupe



CFM
LATINAMERICAN
SECRETARIAT
(SPLA) 2006 - 2009

“Project Evangelical Solidarity”

Integrate the Latinamerican Christian Family Movement (CFM) to a modern dynamics committed to the principles and vision of the Compendium of the Social Doctrine of the Catholic Church (3.2)
It pretends to implement a reorganization with a prospective vision of CFM after an analysis of the four pilars : Solidarity, Spirituality, Formation and Promotion, including the challenge that CFM faces regarding the family desintegration, done by SPLA 2002 – 2005.

What does it consist of

Offer to the Latinamerican CFM a system based on processes, as an option, to assist in achieving its evangelizing goals. The purpose of this system is: identify, evaluate, implement, manage and continuously improve the activities we do in our apostolate and its interactions as a comprehensive system, striving to improve our service to our Lord through families and youth.

The system's elements are: its methodology, pedagogy, structure of the service, bibliographic materials and the information needed for its implementation and application of processes and systems during the basic formative cycles of the CFM. And the required training for its application.

METHODOLOGY

PEDAGOGY
OF FAITH

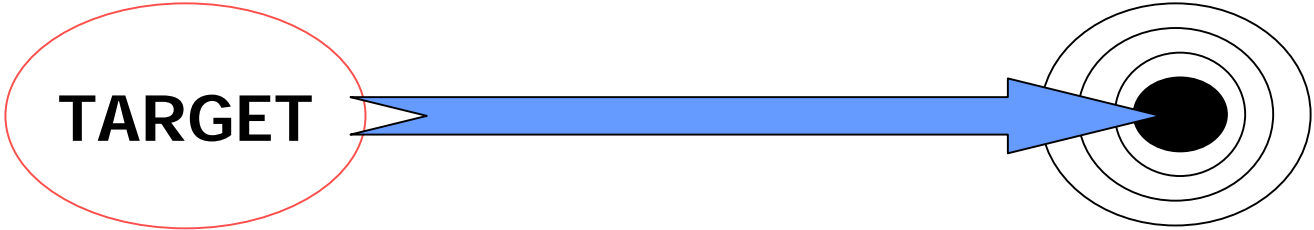
UPDATED BOOKS

SERVICE
STRUCTURE

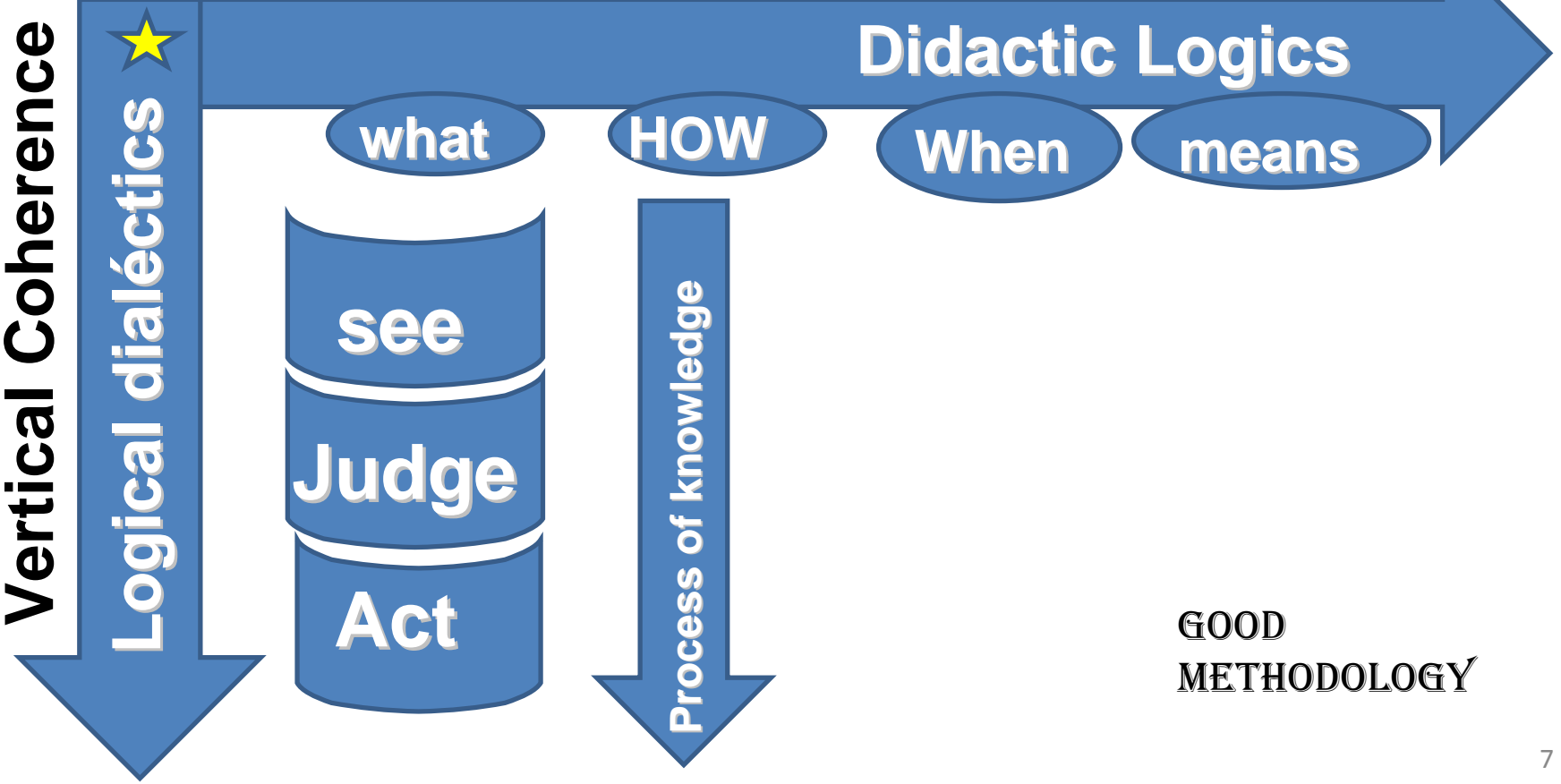
PROCESSES
AND SYSTEMS



METHODOLOGY



Horizontal Coherence



**GOOD
METHODOLOGY**

TO SEE

Objectively observe events; the commitment agreed around the theme studied is evaluated, chapter headings are discussed, and life experiences and participants opinions are shared. During this dialogue a question, or a concern pops up which make this learning experience meaningful.

TO JUDGE

Reality is examined in the light of the word of God as interpreted by the Church and also under the humanistic light of science. Judging is crucial in the learning process, because the group acquires new information which is weaved into preexisting knowledge.

TO ACT

The action agreed upon is a group effort. This step should never be skipped, so that the members of the basic level team may live, grow and change.

It is applied in the books of BFC, formation gatherings and congresses so as to make these events more participatory

PEDAGOGY OF FAITH

***Pedagogy
Of Faith***

SETTING
OR HEART



MYSTIC OR
SPIRITUALITY

SCIENCE
OR
REASON

Science or Reason

- **Methodic study**
- **Motivation**
- **Objective**
- **Contents**
- **Didactic Logic**
- **Dialectic Logic**
- **Dialogue**
- **Synthesis**
- **Evaluation**

Self-giving

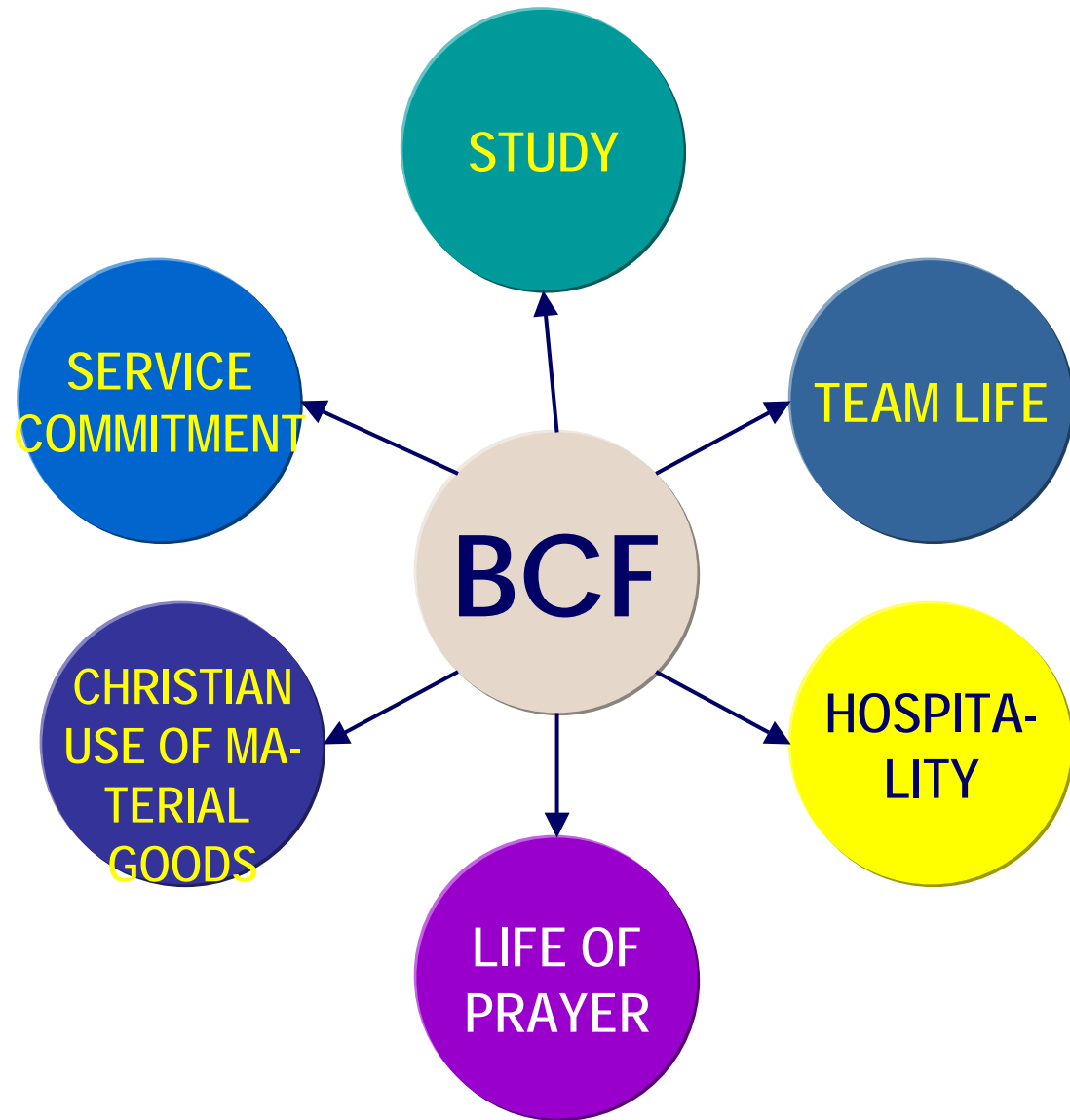
- **Spirituality**
- **Purity of intention**
- **Life of prayer**
- **Testimony**
- **Search for truth**
- **Apostolate**
- **Charism**

Ambience

- **Encouraged by love**
- **Team life**
- **Personal Contact**
- **Hospitality**
- **Service**
- **Commitment**
- **Economic Cooperation**
- **Joy**

The Basic Cycle of Formation (BCF) and the Six Basic Demands

The participation of married couples and youths in BCF implies the practice of six basic demands, which in themselves are opportunities for growth, namely:



***UPDATED
BOOKS***

Themes of 1st level book: I BELIEVE IN THE FAMILY

- SITUATION OF THE FAMILY IN CONTEMPORARY SOCIETY
- THE FAMILY IN GOD'S PLAN
- THE CHRISTIAN FAMILY MISSION

➤ Themes of 2nd level Book: The Family, A Hope for human society

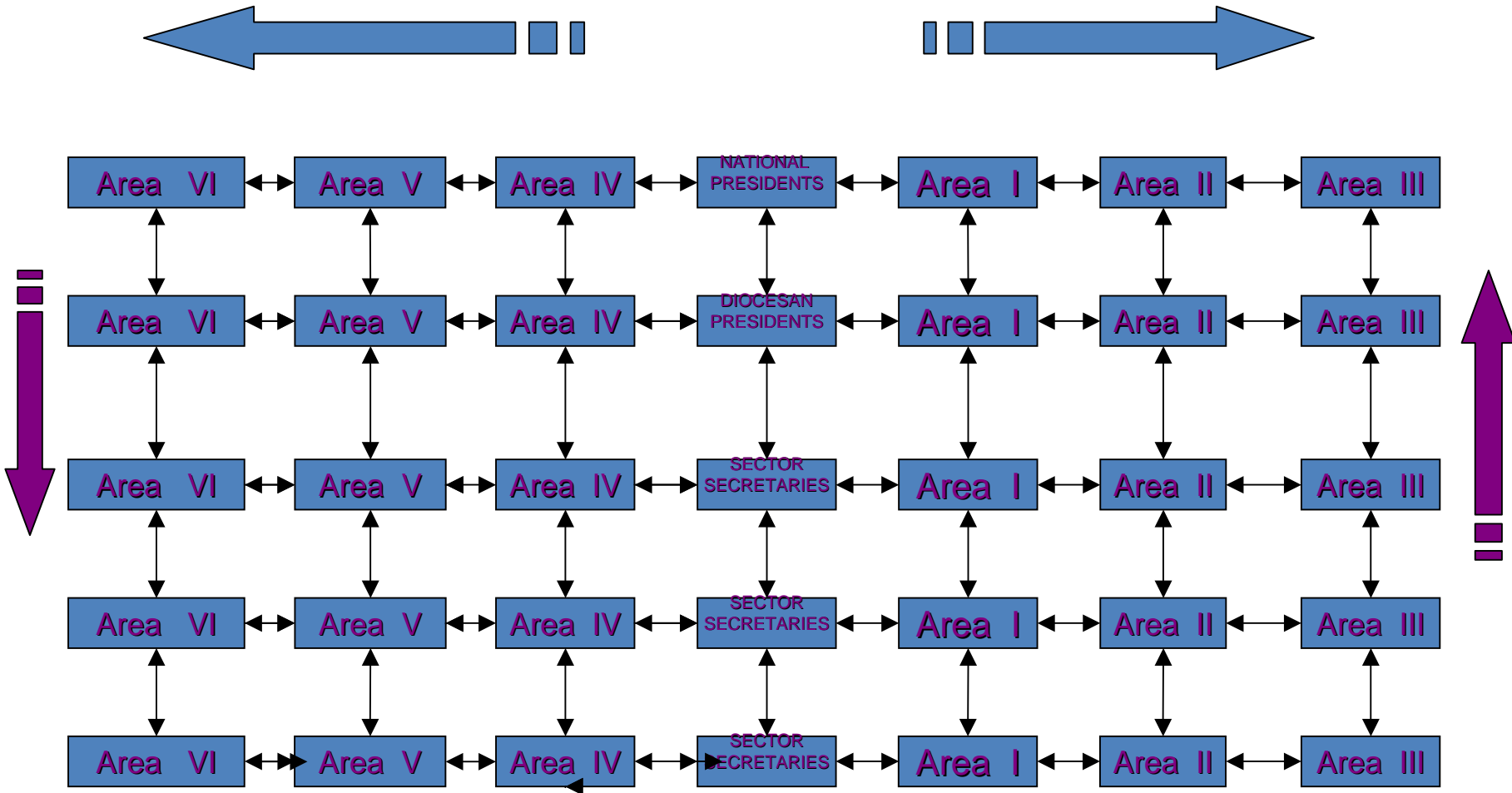
- THE COMMUNITY: GIFT AND TASK
- CHRISTIAN PERSPECTIVE OF FAMILY
- AIMING TOWARDS A FAMILY FULLY HUMAN AND CHRISTIAN
- THE FAMILY, HOPE FOR HUMANITY

Themes of 3rd level book: The power of Love

- THE GREAT CHALLENGES FACED BY MODERN FAMILIES
- THE FAMILY AND GOD'S KINGDOM
- PERSONAL GROWTH
- THE SOCIAL DOCTRINE OF THE CHURCH
- FACING THE FUTURE

SERVICE STRUCTURE

Communication Diagram within CFM



Vertical Communication by functions



Horizontal Communication of Direction

	MACRO VALUE	JOINT VALUES
▶ AREA I	<i>Conversion</i>	Hope, love and focus
▶ AREA II	<i>Service</i>	Commitment, availability and responsibility
▶ AREA III	<i>Justice and Solidarity</i>	Generosity, honesty and order
▶ AREA IV	<i>Unity and Shared Responsibility</i>	Friendship, respect and living together
▶ AREA V	<i>Faith</i>	Humility, fraternity and spirituality
▶ AREA VI	<i>Conversion</i>	Tenacity, sobriety and loyalty

Organization Manual

Document that contains detailed information regarding the administrative directorate, job descriptions, structures and functions of the service secretariats of CFM. It specifies hierarchical levels, authority and responsibility tiers, communication and coordination channels; likewise it contains describing, in graphic form, the national structure of CFM

Being and Doing of CFM teams

Documents containing procedure manuals at the three levels of CFM operational structure i.e : national, diocesan and sector or parish levels.

***PROCESSES
AND
SYSTEMS***

PROCESS:

A set of activities that interact in order to transform input elements into results.

APPROACH BASED ON PROCESSES:

A desired result is more efficiently achieved when related activities and resources are managed as a process, this is precisely the approach based on processes.

SYSTEMIC APPROACH:

It establishes that identifying, understanding and managing interrelated processes as a system, contributes to an organization's efficiency and efficacy in achieving its goals.

► Processes approach within the CFM.

Inputs

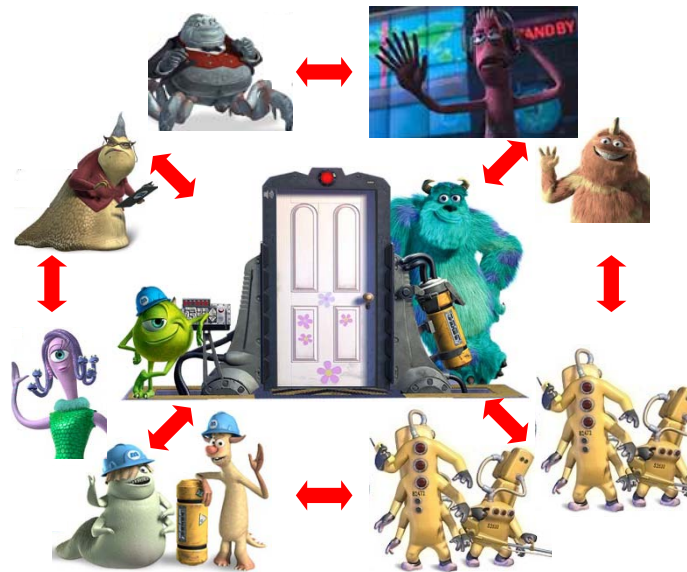
Input Elements
(Includes means)

PROCESS
(set of interacting activities)

Outputs

Product
Results from a Process

- Service Structure
(formed/trained)
 - Promoters
 - Zone Coord. E.
 - Sector Secretaries
 - Sector Team
 - Diocesan Team
 - Nacional Team, etc.
- Teams:
 - Methodology
 - Pedagogy
 - Formative Courses
 - Etc. etc.



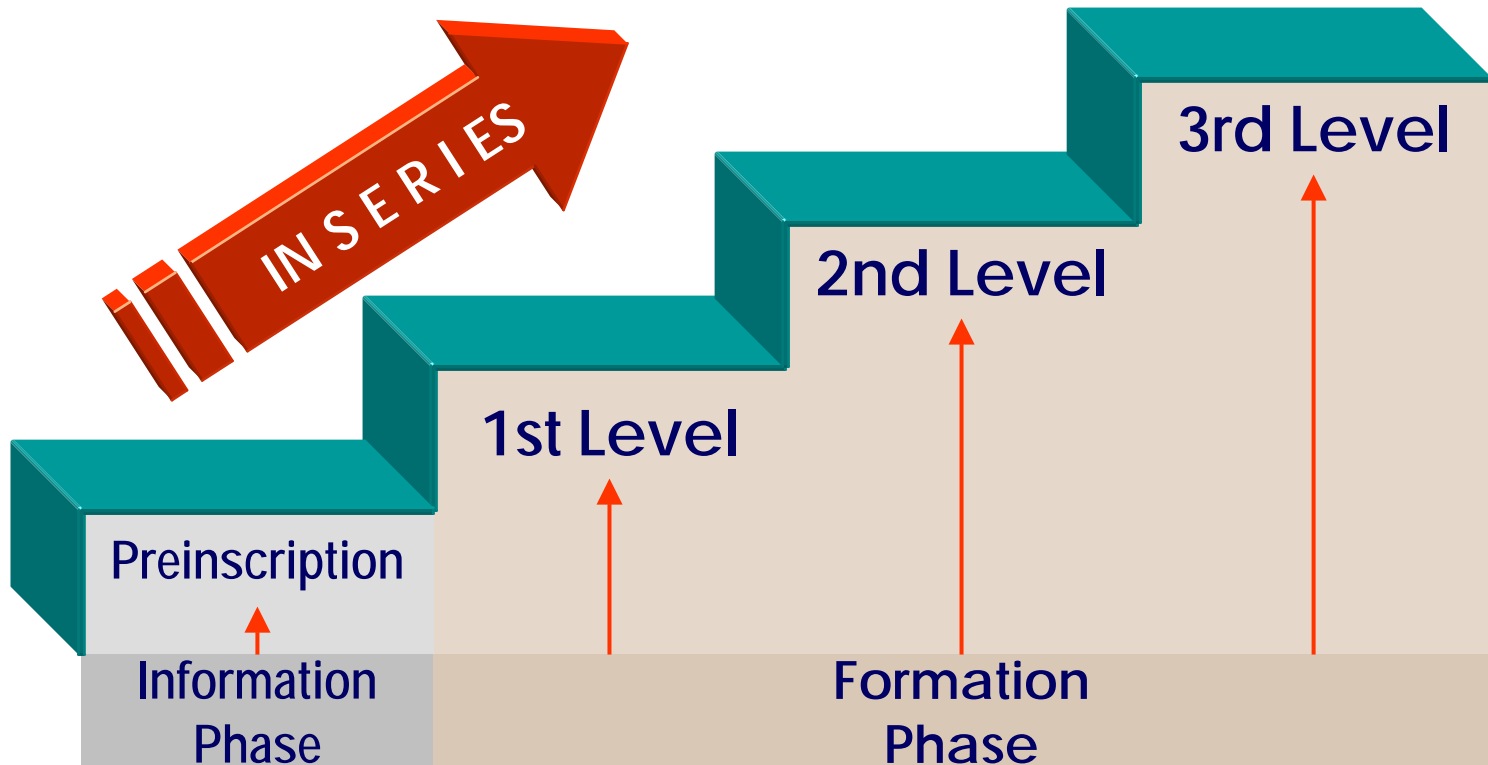
**MEMBERS OF
CFM**

**WITH
BASIC FORMATION**

**FOR THE
APOSTOLATES**

- Formación materials:
 - Team book mat.
 - promoters book mat.
- Members of basic team

BASIC FORMATION CYCLE (BFC)



The objective of the BFC is to offer a formative process and NOT an event in the life of a family. Time in the CFM: Three years and two months

In the BFC, there are three special moments which must be experienced during the three years, namely:

First Level



Encounter for Fundamental Evangelization
KERIGMA

Second Level



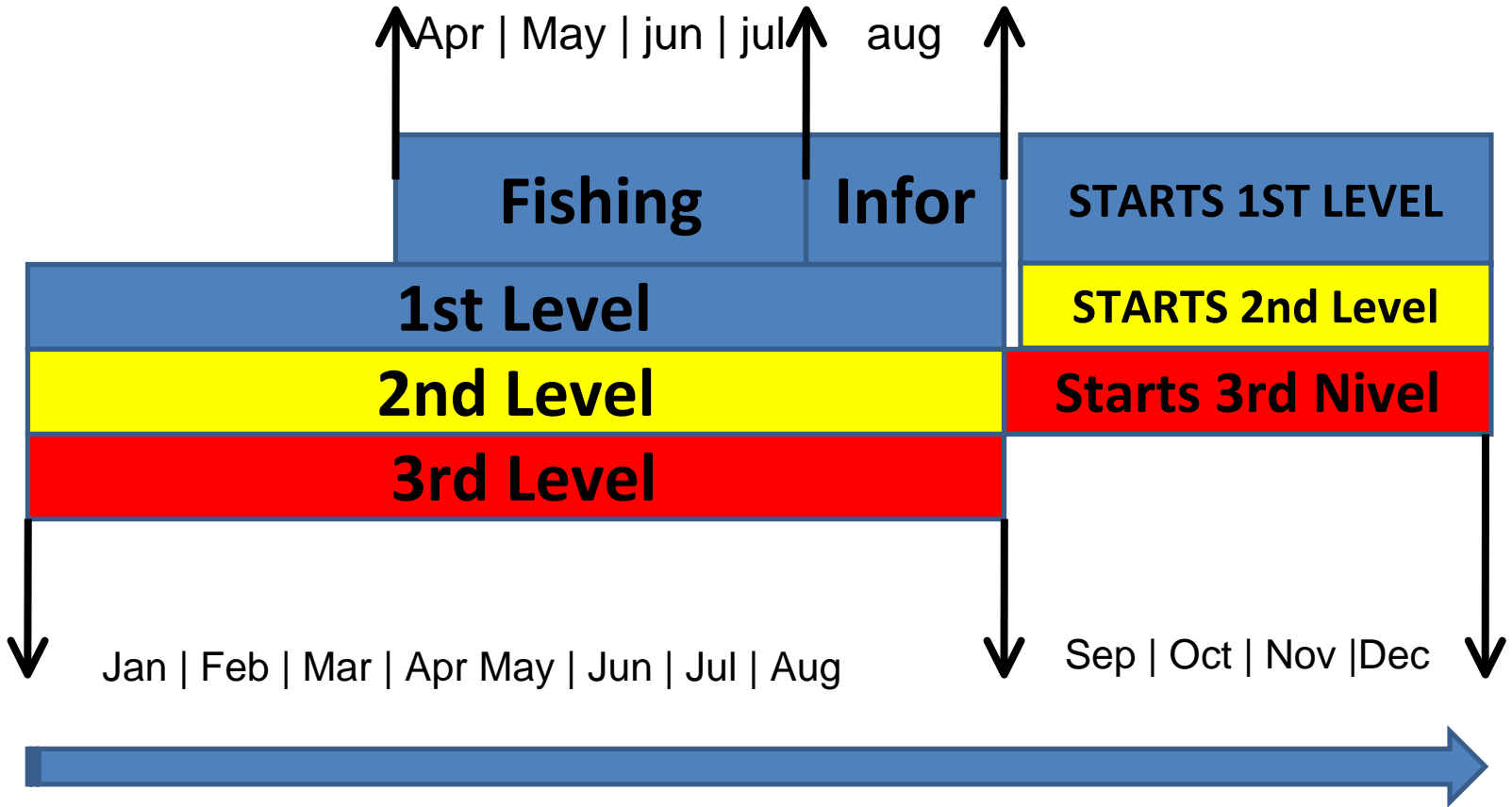
Couples' Encounter

Third Level



Family Encounter

Basic Formation Cycle CBF



Span of time: Whole of 2010

The BCF conducted in this systematic manner, gives us.

- 1.- New members join CFM every year at the 1st Level of formation. Membership remains young.
- 2.- At the end of BFC, the members who finished go out to serve in their parish, in a pastoral (family) or in organizations of civil society; many remain to serve within CFM as group promoters of basic teams or members of such service teams: training, Kerigma, Couples' Encounters, Family Encounters, Choirs, liturgy, etc.
- 3.- CFM service teams are renewed every two or three years.

FISHING PERIOD



Inicialmeeting
Training of coordinators.
Strategias for promotion and fishing.
Etc.

Affix ads in parishes.
Affix ads in shools.
Radio Spots.
Interviews in Catholic radios.
Etc

One by one.
During masses.
List of Premarriage courses.
In High Schools
Etc.

Preinscription Period

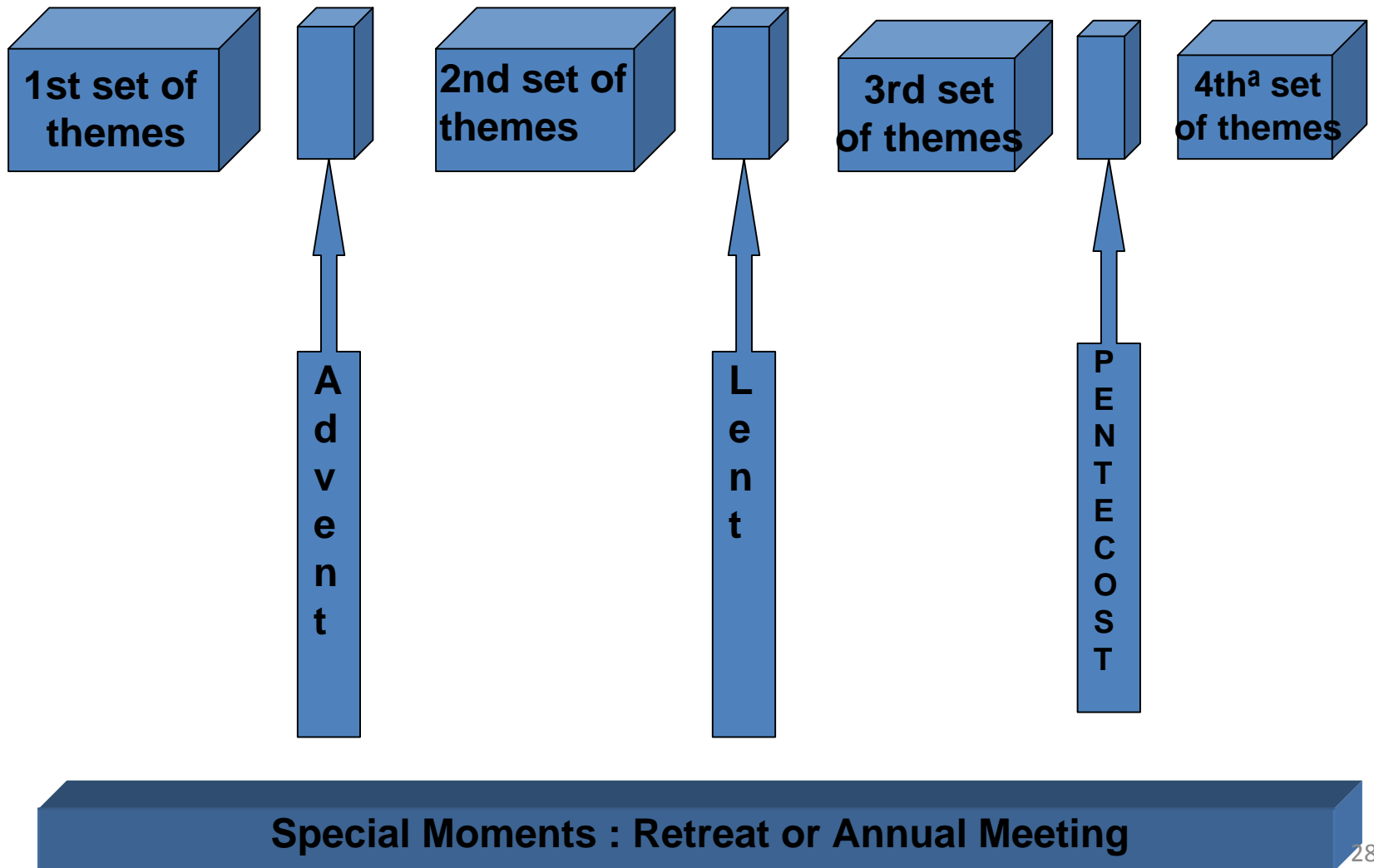
August

This period consists of three meetings (one each week), for the purpose of sharing information about CFM.

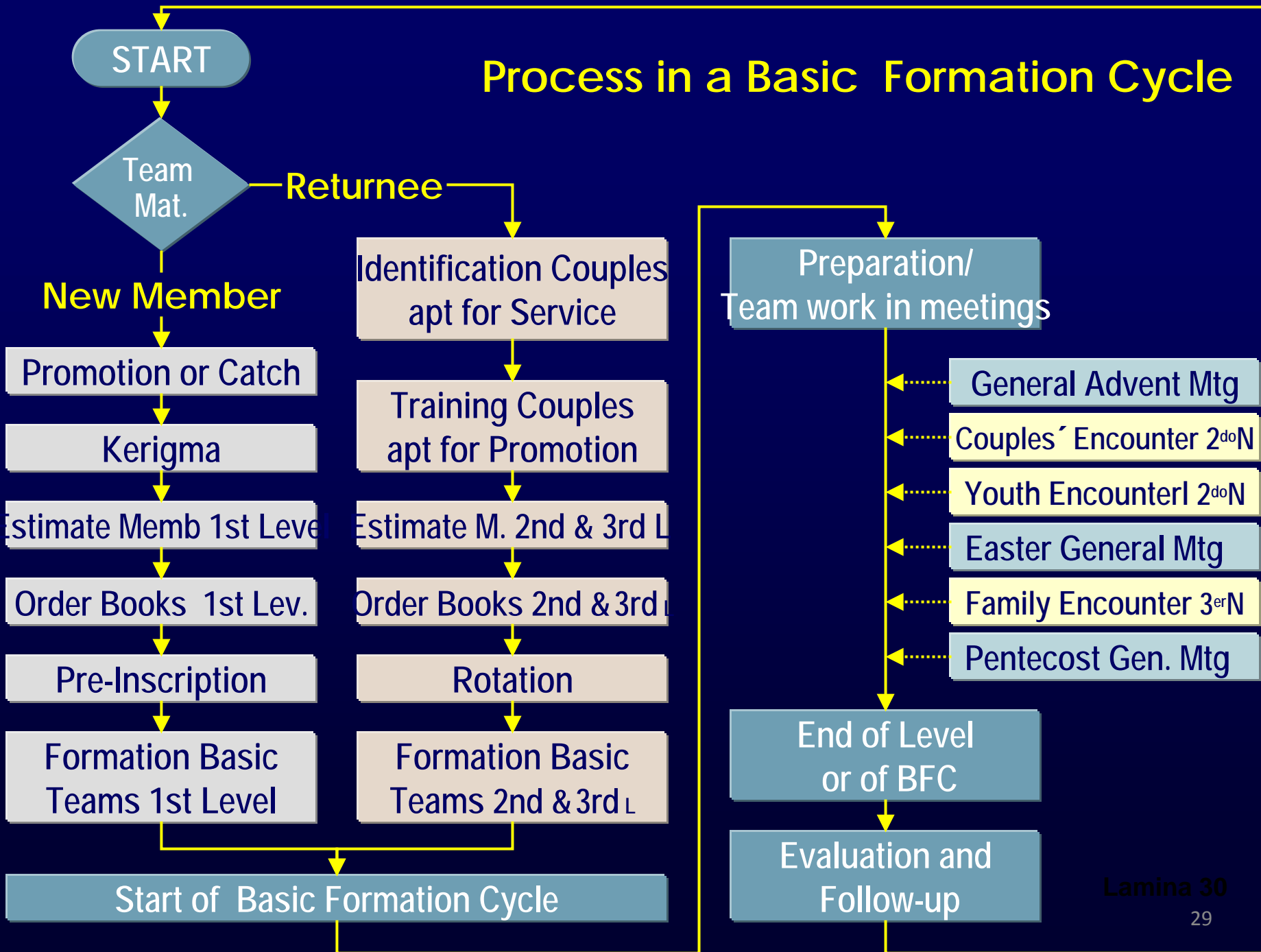
In these meetings three introductory themes are developed in order to let participants know what CFM is all about, providing them a clear and panoramic idea about the ideals and mystic, so that new members may grasp what their commitments are when they join the CFM.

BASIC FORMATION CYCLE (BFC)

PROCESS IN ONE LEVEL



Process in a Basic Formation Cycle



FROM MFC In México FOR LATINAMERICA



Countries that have adopted this model: Bolivia, Colombia, Costa Rica, Cuba, El Salvador, Guatemala, Honduras, Panama, Paraguay, Peru, Dominican Republic , and Venezuela.

A total of 13 of 18 COUNTRIES

“Knowing Jesus Christ through faith is our joy; to follow Him is a grace, and transmitting this treasure to others is a task that the LORD entrusted to us when called and chose us.”

(Document of Aparecida, Introduction No. 18)